

# RENAULT CLIO



DRIVE THE CHANGE











# MEET CLIO YOU KNOW YOU WANT TO

**AT FIRST YOU CATCH ONLY A GLIMPSE. GLOSSY CURVES. CHROME HIGHLIGHTS. AGILE PHYSIQUE. THE NEW RENAULT CLIO.**

As you admire its beauty and savour its elegance, you can truly sense the passion and craftsmanship within. You are captivated, intrigued by the sleek design, the aura of European quality. Yet the new Renault Clio promises you more... much more.

The new Clio is a true Renault triumph. It is a testament to the Renault design renaissance, led by Renault's Director of Industrial Design, Laurens van den Acker. The all-new Renault Clio boasts a pedigree like no other. Inspired by the highly acclaimed DeZir concept car, the new Renault Clio means you can now take your own immaculate piece of Renault design home to keep.

When it comes to advanced technology and innovation, the new Renault Clio is a high achiever, and the Renault design engineers have pushed the boundaries further than ever before. The new Energy engines in the Renault Clio embrace countless combinations of innovative technologies, some resulting from our F1® racetrack expertise, in the search for unprecedented performance. Innovation and excellence

of design can be found inside and out, from barely discernable rear door handles, to multimedia systems presented perfectly in a dynamic aircraft wing interpretation of the dash and centre console.

With a heightened importance on environmental credentials, Renault has responded with exciting new engine technology – providing great performance with reduced fuel consumption and CO<sub>2</sub> emissions. Renault Clio features two turbo-charged Energy petrol engines – the TCe 90 with Stop&Start technology and the TCe 120 with an Efficient Dual Clutch transmission.

The new Clio is a true masterpiece. So it's no wonder the Renault Clio Expression TCe 120 was awarded Australia's Best Light Car 2013.



RENAULT Clio Expression TCe 120





# UNIQUE PERSONALITY



Overseas Model Shown

NOT ONLY IS THE NEW RENAULT CLIO A STUNNING REPRESENTATION OF RENAULT'S NEW DESIGN ETHOS, IT IS A CAR BUILT TO INSPIRE PASSION IN THE HEARTS OF ALL THOSE WHO EXPERIENCE IT.

A five-door car with a three-door attitude, it is a dynamic balance of beauty and smarts, exuding passion and commanding respect. The signature front end Renault styling is unforgettable, distinctive and dramatic. Shape and form are toned and lithe; and exceptional functionality isn't just a promise, it is a given.

Renault believes a car is not simply a means of getting from one place to another; it is a personal choice, an extension of your uniqueness. The Renault Clio is designed to be a true expression of the driver's style, in every way possible. Personalise and theme your Renault Clio to reflect your life. Colour, trims, wheels and upholstery are all customisable to create a look that is completely your own.

But more than that – the new Renault Clio is the perfect complement to your lifestyle; making you feel good, encouraging you to express and celebrate your uniqueness. Opening you up to new experiences and adventures, providing unwavering support in any situation and keeping you connected to what you care about. Renault Clio helps you ensure your life is simpler, more beautiful and more fun – with the overall goal of making a meaningful difference to your world. What you look for in a companion, you find in the new Renault Clio.





# ENTICING DESIGN



THE LAUNCH OF THE RENAULT DEZIR, THE CONCEPT CAR BY RENOWNED DESIGNER LAURENS VAN DEN ACKER AND HIS TEAM, SET THE AUTOMOTIVE INDUSTRY ABUZZ.

Heavily influenced by curvaceous forms and emotional imperatives, the new Renault Clio is designed as a sensuous sculpture. Its artists aim to stimulate our desires and engender warmth, confidence and seduction.

The sleek design of the new Renault Clio gives a sassy, sports car attitude to an elegant and practical five-door triumph. The perfectly proportioned dynamic exterior and assertive stance give balance to the pronounced shoulder lines and coupé-like silhouette. Renault has conjured something wholly extraordinary in the new Renault Clio. Bold and distinctive, the front end is all about Renault and features the instantly recognisable Renault logo against a dramatic gloss black background.

Inside, its inimitable style and functionality speak volumes. The dramatic aircraft wing inspired dashboard and the centre console create a futuristic feel, and with its multimedia systems, generous stowage spaces and countless practicalities and indulgences, the new Renault Clio was designed to offer ambience, dynamism and energy to the driver.





# IRRESISTIBLE FEATURES



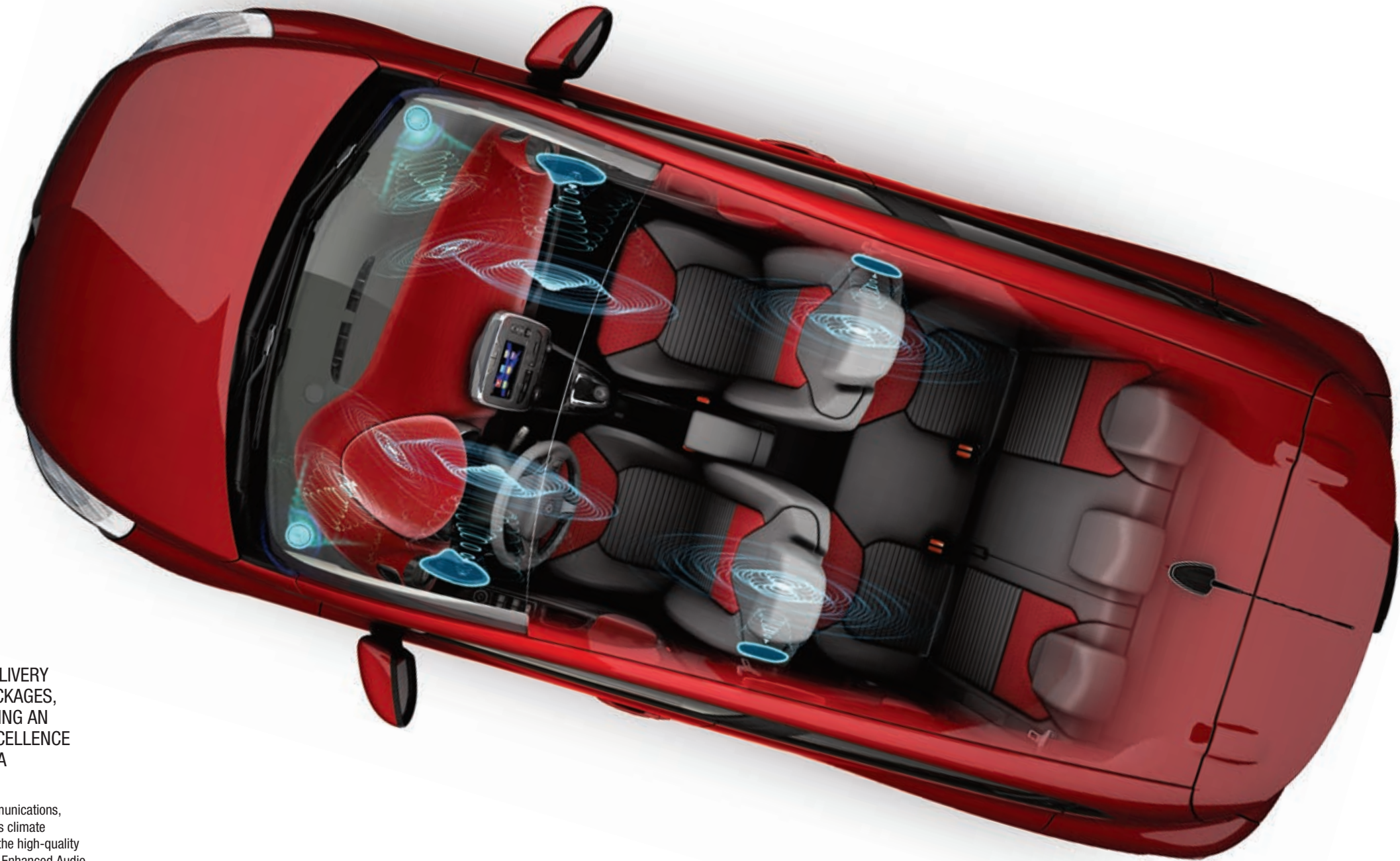
THE NEW RENAULT CLIO BOASTS FEATURES NORMALLY FOUND ONLY IN LARGER CARS. THE SLEEKNESS OF THE EXTERIOR BELIES THE SPACIOUSNESS OF THE CABIN, THE AMPLENESS OF THE BOOT AND STOWAGE, AND THE HOST OF PRACTICAL STORAGE COMPARTMENTS WITHIN.

And that's just the beginning. Renault's exciting technological innovations are sure to make driving the new Clio safer, smarter and more pleasurable than ever before. Then there are the engines: the Energy TCe 90 petrol engine and TCe 120 newly released with the EDC dual clutch automatic transmission. Impressive for their high performance with reduced fuel consumption and CO<sub>2</sub> emissions.

Make your Renault Clio yours and yours alone with personalisation. Renault has made it easy for you to create a look that is affordable and completely your own through your choice of exterior paint colour, roof decals, steering wheel trim colour, cabin trim highlights, exterior trim colour, wheels and interior ambience. A wide range of accessories for extra versatility, style and protection are also available.



# TECHNOLOGY FOR TOMORROW



IN A CLASS OF ITS OWN FOR ITS DESIGN AND DELIVERY OF PERFORMANCE, SAFETY AND EQUIPMENT PACKAGES, RENAULT IS SHAKING UP THE MARKET BY OFFERING AN UNPRECEDENTED LEVEL OF TECHNOLOGICAL EXCELLENCE TO THE RENAULT CLIO AND COMBINING IT WITH A REFRESHING PRAGMATISM.

Featuring some of the highest safety standards and innovative communications, the Renault Clio's distinctive centre console unit houses the vehicle's climate control, Bluetooth® connectivity, reversing camera (if optioned) and the high-quality MEDIANAV multimedia and navigation system or the optional R-Link Enhanced Audio and Navigation – which includes the R-Sound Effect app that even allows you to change the note of your Renault Clio's engine within the cabin.

On a practical level, the new Renault Clio is loaded with features you appreciate daily including cruise control with speed limiter, hands-free entry and engine start with the Renault Smart Card Key and automatic lights and wipers. Manual models feature Stop&Start fuel efficient technology while models with optional R-Link can provide eco driving information on the touch-screen display.



# BEYOND SAFETY



SAFETY COMES IN MANY GUISES: IT CAN BE SOMETHING AS VISUALLY OBVIOUS AS AN AIRBAG SYSTEM OR SEATBELT REMINDER, OR AS INDISCERNIBLE YET CRUCIAL AS CRUMPLE ZONES DESIGNED INTO THE CHASSIS.

Quality is a strategic priority embedded in the culture, and Renault's engineers were determined to achieve the highest safety standards. With the new Renault Clio, they succeeded. Alongside earning a prestigious 5-Star Euro NCAP safety rating, they received NCAP's award for the 'Best Car of 2012' in the 'Super-mini' category.

Innovations range from the practical and helpful like reversing camera\* and cruise control with speed limiter, to more intuitive and responsive technologies. Safety features include reinforced structures, high-efficiency front airbags, head/chest side airbags, Electronic Stability Control with ASR traction control for stability, Anti-lock Braking System, Emergency Brake Assist and Electronic Brake-force Distribution for assistance in emergency situations.

But the Renault Clio doesn't stop there. For next-level safety, the 'Fix4Sure' anti-submarining system in both the front and rear seats keeps occupants from slipping beneath their seatbelts in the case of a collision. Hill Start Assist prevents the Renault Clio from slipping when performing a hill start by keeping the brakes temporarily engaged before you take off. For protection from intruders, Renault's Anti-Intruder Device (R.A.I.D.) automatically locks the doors when the car reaches 30km/h.

\*Option only available on Dynamique





# UNPRECEDENTED FUEL ECONOMY



THE RENAULT CLIO IS A SERIOUS OVER-ACHIEVER. IT EXCELS IN EVERYTHING – STYLE, ELEGANCE, DYNAMISM, DESIRABILITY AND DRIVING PERFORMANCE. AT THE SAME TIME, IT DELIVERS OUTSTANDING ENVIRONMENTAL RESPECT AND FUEL ECONOMY.

Renault's new range of Energy engines have been designed by several of Renault's F1® engineers responsible for the highly successful V10 engine in the 1990s. They were tasked with the job of developing small, highly efficient turbo engines, the results of which you can now experience in the new Renault Clio.

The Energy TCe 90 in the Authentique and Expression models combines a turbo-charged petrol engine with innovative Stop&Start technology which reduces fuel consumption but maximises power, delivering the performance of a 1.4L naturally aspirated engine. The TCe 90 emits just 105g of CO<sub>2</sub> per km, equating to a combined cycle of just 4.5L per 100km\*, the lowest in its competitive set.

The Energy TCe 120, available with the Expression and Dynamique configurations, is mated with a six-speed EDC automatic transmission to provide ultra-responsive power and supreme efficiency. CO<sub>2</sub> emissions are low at 120g/km and combined cycle figures impress at 5.2L per 100km.\*

True love shouldn't mean sacrificing what's important to you. Whichever engine powers your new Renault Clio, you'll enjoy lower fuel costs without compromising performance or pleasure.

\*Vehicle tested in accordance with ADR 81/02 based on combined cycle (city/highway). Actual fuel consumption and CO<sub>2</sub> emissions depend on factors such as traffic conditions, vehicle condition and how you drive.



# DESIGN



1. LED daytime running lights in front grille 2. Rear spoiler 3. Privacy glass 4. Customisable wheels 5. Spacious 300L boot 6. Hidden door handle and coupé styling

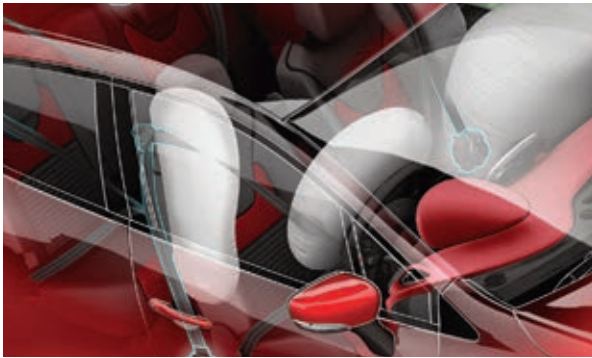
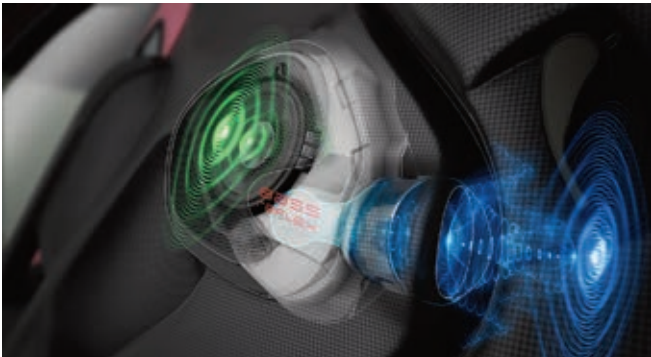
# INTERIOR



1. Black cloth upholstery with grey hexagonal detail 2. Gloss black interior trim 3. Digital speedometer 4 - 5. Thoughtful storage spaces



# TECHNOLOGY



1. R-Link Eco monitor\* 2. Hands-free entry and engine start 3. Audio system with Renault Bass Reflex 4. Rear camera\* 5. Front, head and chest side airbags 6. Electronic Stability Control 7. Cruise control with speed limiter

# ACCESSORIES FOR VERSATILITY



1. Boot net – floor (7711227501) 2. Boot net – seat back (7711227502) 3. Boot separator (dog grille) (8201321369) 4. Cup and lighter kit (8201375535) 5. Roof bars (8201321618) 6. Roof pod – 480 litres (7711575525) 7. Ski rack (7711420778 – 4 sets of skis / 7711420779 – 6 sets of skis) 8. Tablet support (B8181PAD00AU) 9. Surfboard/surf ski carrier kit (7711419628)

Other accessories available  
Bicycle carrier kit – aluminium (7711236315B)  
Coat hanger (8201382042)  
Front armrest centre console (8201367091)  
Portable CD player (7711574741)  
Snow chains (7711573117)  
Tow bar (G9162B9800AU)  
Tow bar harness (8201289531)

\*Option on Dynamique



# ACCESSORIES FOR PROTECTION



**1. Alarm kit** (8201275125) **2. Boot protection** – inner lining (8201361213) **3. Boot tray** – moulded (8201321361) **4. Bracket fire extinguisher** (8201289523) **5. Clio car cover** (7711428236) **6. Door sill protection kit** – front (8201391423) **7. Grey boot mat** (8201321290) **8. Weathershield** – slimline kit (7711574780) **9. Mud flaps** – front or rear (8201212479) **10. Parking sensor kit** (7711238161 – front / 8201373014 – rear)

**Other accessories available**  
Anti-theft wheel nut (7711239110)  
Door sill protection kit – rear (8201391425)  
Protector/tyre change mat (85010GEN00AR)  
Safety & first aid kit (7711425749)

# ACCESSORIES FOR STYLE



**1. Floor mat set** – premium red (8201321304) **2. Wheel arch mould** – carbon fibre effect (8201348104 – front / 8201348101 – rear) **3. Front spoiler** – carbon fibre effect (8201343609) **4. Fog light trim** – carbon fibre effect (8201345043) **5. Mirror trim kit** – carbon fibre effect (8201348113) **6. Rear diffuser** – carbon fibre effect (8201289557)

**Other accessories available**  
17" Kouranos alloy wheels – black (8201335578)  
Floor mat set (Grey 8201321300 / Premium blue 8201321302 / Premium grey 8201171137 / Premium brown 8201321306 / R.S. 8201370538 / Grey front 8201339986)  
Front spoiler – gloss black (8201345035)  
Gear knob R.S. logo (8201300589)  
Side sills – carbon fibre effect (8201289561)



# UNMISTAKABLY YOURS

YOUR SENSE OF STYLE AND TASTE ARE A UNIQUE COMBINATION OF THE THINGS THAT MAKE YOU ONE-OF-A-KIND.

In a first for its class and price range, the new Renault Clio allows you to celebrate and enjoy your uniqueness even while behind the wheel. The new Renault Clio offers the chance to configure your vehicle with a huge range of different options for interior and exterior style elements, from glossy coloured body strips to your choice of steering wheel and interior ambience.

With thousands of possible combinations, deciding on your favourite can be difficult! So, to make it a little easier, the Renault designers have suggested three

stylish combinations to reflect your preferred look – Sport, Trendy and Elegant. These selections combine exterior body colours with complementary interior trims, wheels and exterior trims, to create a captivating style that suits you inside and out. With multiple colour combinations within each theme, these suggestions are a great way to personalise your new Renault Clio to the maximum effect.

## SPORT



## TRENDY



## ELEGANT





# AUTHENTIQUE



The entry level Renault Clio Authentique is anything but basic. The interior envelops you with style and class, a modern edge and a glimpse into the future. The seat upholstery features red detail, complementing the black interior harmony décor and dashboard. Dramatic good looks.

The outside curves are enhanced with a rear spoiler, 15" 'Extreme' steel wheels and body coloured rear bumper. Simply stunning.

- KEY FEATURES**
- Energy TCe 90 turbo-charged petrol engine
  - Stop&Start fuel efficient technology
  - Rear spoiler
  - ABS, Electronic Stability Control, ASR traction control, EBD and Emergency Brake Assist
  - Hill Start Assist
  - Driver and front passenger front and side head and chest airbags
  - Remote central locking with Renault Smart Key Card
  - Cruise control with speed limiter
  - Manual air conditioning
  - 2 speaker audio system with AM/FM, MP3, aux and USB input with fingertip controls and Renault Bass Reflex
  - Bluetooth® phone pairing with audio streaming
  - LED daytime running lights in front grille
  - Rear fog lights
  - Driver, front and rear passenger seat belt warning light and tone
  - Fix4Sure anti-submarining system



BLACK / RED CLOTH SEATS



15" 'EXTREME' STEEL WHEELS

# PERSONALISATION

**Roof decals** – make your Renault Clio Authentique distinctly yours with a high-quality roof decal in one of three unique designs. Your selected design will be factory fitted to ensure it remains eye-catching and exciting for years to come.



SPORT



DOTS



TRICOLOUR



# EXPRESSION



Extra technology and extra features are hosted within the cabin of the Expression. The MEDIANAV multimedia Arkamys audio system features 4 speakers, radio, MP3, auxiliary and USB inputs – which can be controlled from fingertip controls, tucked in behind the leather-wrapped steering wheel. The 7" MEDIANAV touch-screen is framed by the black dashboard and gloss black interior trim. The upholstery is elegant black, accented with grey.

The exterior entices with 16" 'Fairway' flex wheels, chrome radiator strip and body coloured electric door mirrors.

### KEY FEATURES

- Energy TCe 90 or TCe 120 turbo-charged petrol engines
- Stop&Start fuel efficient technology (manual only)
- Renault MEDIANAV system with 7" touch-screen display
- Rear spoiler
- ABS, Electronic Stability Control, ASR traction control, EBD and Emergency Brake Assist
- Hill Start Assist
- Driver and front passenger front and side head and chest airbags
- Cruise control with speed limiter
- 4 speaker Arkamys audio system with AM/FM, MP3, aux and USB input with fingertip controls and Renault Bass Reflex
- Bluetooth® phone pairing with audio streaming
- LED daytime running lights
- Front and rear fog lights
- Gloss black interior trim and chrome front grille
- Driver, front and rear passenger seat belt warning light and tone
- Fix4Sure anti-submarining system
- 16" 'Fairway' flex wheels



BLACK / GREY CLOTH SEATS



16" PASSION SILVER ALLOY

### PERSONALISATION

The Renault Clio Expression can be customised in four ways:  
**Interior trim** – the steering wheel, door strips, air vent surrounds, transmission trim\*, door handles and front speaker trims can be customised in one of four glossy colours or one of three expressive themes.  
**Exterior trim** – add gloss black door mirrors, rear bumper and side protection strips, then choose between chrome or one of four glossy colours to accentuate the door protection strips, rear hatch and front grille.

\*Manual transmission only

# PERSONALISATION

To assist you in creating the perfect Renault Clio, your dealer will guide you through the variety of options available. Certain combination limitations apply.

### INTERIOR TRIMS

Glossy highlights for the steering wheel, door strips, transmission trim and air vent surrounds. Also available in Black (shown on left) including door handle and front speaker trim.



DOTS

TRICOLOUR

SPORT



BLUE

IVORY

RED

### WHEEL RIMS



16" PASSION BLACK ALLOY

16" PASSION IVORY ALLOY

### EXTERIOR TRIMS

Glossy highlights for the rear hatch, door protection strips and front grille.



BLACK

BLUE



CHROME

IVORY



RED

### ROOF DECALS



DOTS

SPORT

TRICOLOUR

Dynamique models shown

Dynamique models shown



# DYNAMIQUE



R-Link option shown

The top of the range Dynamique is the jewel of the Renault Clio line-up. Technology enhances every moment inside; style captivates you at every turn.

The Renault Smart Card Key provides the convenience of hands-free entry and engine start. Automatic climate control, wipers and lights create a comfortable, modern interior feel, complemented by the sleek black dashboard, gloss black interior trim, black and grey upholstery and leather-wrapped steering wheel and gear lever.

The 7" MEDIANAV multimedia touch-screen system allows intuitive control of the Arkamys audio system with Renault Bass Reflex system.

Outside, the Renault Clio's curvaceous exterior dresses up with the Dynamique's 16" 'Passion' alloy wheels, chrome trim on the front grille and tinted windows.

## KEY FEATURES

- TCe 120 turbo-charged petrol engine
- Renault MEDIANAV system with 7" touch-screen display
- Rear spoiler
- ABS, Electronic Stability Control, ASR traction control, EBD and Emergency Brake Assist
- Hill Start Assist
- Rear parking sensors
- Driver and front passenger front and side head and chest airbags
- Cruise control with speed limiter
- Hands-free entry and engine start
- Automatic climate control
- 4 speaker Arkamys audio system with AM/FM, MP3, aux and USB input with fingertip controls and Renault Bass Reflex
- Bluetooth® phone pairing
- LED daytime running lights
- Front and rear fog lights
- Gloss black interior trim and chrome exterior trim
- Driver, front and rear passenger seat belt warning light and tone
- Fix4Sure anti-submarining system
- 16" 'Passion' alloy wheels
- Rear privacy glass
- Customisable interior, exterior and wheels



BLACK / GREY CLOTH SEATS



16" 'PASSION' SILVER ALLOY WHEELS

## PERSONALISATION

With the top-range Dynamique comes the highest level of customisation possible to make your Renault Clio distinctively yours, inside and out. **Interior trim** – the steering wheel, door strips, air vent surrounds, door handles and front speaker trims come in glossy black as standard in the Dynamique, or can be customised with three other contemporary colours or three expressive themes. **Exterior trim** – choose between standard chrome or one of four glossy colours to accentuate the exterior of your Dynamique including door

protection strips, rear hatch and front grille. **Seats and interior ambience** – the Dynamique allows you to customise the interior door panels, dashboard and seats in standard black or one of three additional colour combinations. **Wheels** – deviate from standard with 16" 'Passion' Black or Ivory alloy wheels, or add 17" 'Diamond' alloy wheels in four stunning colour combinations. **Roof decals** – three roof decal options add a fun, fresh exterior appeal to your Renault Clio.

# PERSONALISATION

To assist you in creating the perfect Renault Clio, your dealer will guide you through the variety of options available. Certain combination limitations apply.

## INTERIOR TRIMS

Glossy highlights for the steering wheel, door strips and air vent surrounds. Also available in Black as standard (shown on left).



DOTS



TRICOLOUR



SPORT



RED



BLUE



BLUE



IVORY



RED



BROWN



BLACK (STANDARD)

## EXTERIOR TRIMS

Glossy highlights for the rear hatch, door protection strips and front grille.



BLACK



BLUE



CHROME (STANDARD)



IVORY



RED

## WHEEL RIMS



16" PASSION BLACK ALLOY



16" PASSION IVORY ALLOY



17" DIAMOND BLACK ALLOY



17" DIAMOND BLUE ALLOY



17" DIAMOND IVORY ALLOY



17" DIAMOND RED ALLOY

## ROOF DECALS



DOTS



SPORT



TRICOLOUR



# OVERVIEW

## SPECIFICATIONS

| Model                                       | Authentique                            | Expression  | Expression              | Dynamique |
|---|--|-------------|-------------------------|-----------|
| Body type                                   | Hatch                                  |             |                         |           |
| Seating capacity                            | 5                                      |             |                         |           |
| ENGINE                                      | TCe 90                                 |             | TCe 120                 |           |
| Type  | H4Bt 0.9 Petrol Turbo                  |             | H5Ft 1.2 Petrol Turbo   |           |
| Capacity (cc)                               | 898                                    |             | 1197                    |           |
| Number of cylinders/valves                  | 3 / 12                                 |             | 4 / 16                  |           |
| Bore x stroke (mm)                          | 72.2 x 73.1                            |             |                         |           |
| Compression ratio                           | 9.5 : 1                                |             | 10 : 1                  |           |
| Maximum power (kW @ rpm)                    | 66 @ 5250                              |             | 88 @ 4900               |           |
| Maximum torque (Nm @ rpm)                   | 135 @ 2500                             |             | 190 @ 2000              |           |
| Fuel type (recommended)                     | Unleaded 95 or 98 (RON rec.)           |             |                         |           |
| Fuel injection type                         | Multipoint sequential petrol injection |             | Direct petrol injection |           |
| TRANSMISSION                                |  |             |                         |           |
| Type  | 5-speed manual                         |             | EDC automatic gearbox   |           |
| Driven wheels                               | Front                                  |             | Front                   |           |
| Speeds at 1000 rpm in: 1 <sup>st</sup> gear | 6.78                                   |             | 7.35                    |           |
| 2 <sup>nd</sup> gear                        | 12.91                                  |             | 11.85                   |           |
| 3 <sup>rd</sup> gear                        | 20.48                                  |             | 18.03                   |           |
| 4 <sup>th</sup> gear                        | 28.31                                  |             | 25.35                   |           |
| 5 <sup>th</sup> gear                        | 38.29                                  |             | 33.2                    |           |
| 6 <sup>th</sup> gear                        | -                                      |             | 40.97                   |           |
| STEERING                                    |  |             |                         |           |
| Type  | Electric variable                      |             |                         |           |
| Turning circle between kerbs (m)            | 10.6                                   |             |                         |           |
| Turns lock-to-lock                          | 2.71                                   |             |                         |           |
| WHEELS                                      |  |             |                         |           |
| Wheels (inches)                             | 6J 15                                  | 6.5J 16     |                         |           |
| Tyres                                       | 185/65 R 15                            | 195/55 R 16 |                         |           |
| BRAKING                                     |  |             |                         |           |
| Front braking system (diameter x thickness) | Ventilated disc (258mm x 22mm)         |             |                         |           |
| Rear braking system (diameter x thickness)  | Drum (203mm x 38mm)                    |             | Drum (228mm x 38mm)     |           |
| Front suspension                            | MacPherson strut                       |             |                         |           |
| Rear suspension                             | Torsion beam axle                      |             |                         |           |
| PERFORMANCE                                 |  |             |                         |           |
| Max. speed (km/h)                           | 182                                    |             | 199                     |           |
| 0-100 km/h (seconds)                        | 12.2                                   |             | 9.4                     |           |
| FUEL CONSUMPTION <sup>^</sup>               |  |             |                         |           |
| Emission standards                          | Euro 5                                 |             |                         |           |
| Combined cycle (L/100km)                    | 4.5                                    |             | 5.2                     |           |
| CO <sub>2</sub> emissions (g/km)            | 105                                    |             | 120                     |           |
| Extra urban cycle (L/100km)                 | 3.9                                    |             | 4.4                     |           |
| Urban cycle (L/100km)                       | 5.6                                    |             | 6.6                     |           |
| CAPACITY                                    |  |             |                         |           |
| Fuel tank (litres)                          | 45                                     |             |                         |           |
| WEIGHTS (kg)                                |  |             |                         |           |
| Kerb weight (kg)                            | 1019                                   |             | 1104                    |           |
| Payload (kg)                                | 569                                    |             | 553                     |           |

| Model   | Authentique | Expression | Expression | Dynamique |
|---|-------------|------------|------------|-----------|
| Max. towing weight, braked (kg)                                       | 900         |            |            |           |
| Max. towing weight, unbraked (kg)                                     | 580         |            | 625        |           |
| Maximum tow ball download (kg)  | 75          |            |            |           |
| VOLUME  |             |            |            |           |
| Boot volume (litres)  | 300         |            |            |           |
| Maximum boot volume with rear seats folded down (up to roof) (litres) | 1146        |            |            |           |

<sup>^</sup>Vehicle tested in accordance with ADR 81/02 based on combined cycle (city/highway). Actual fuel consumption and CO<sub>2</sub> emissions depend on factors such as traffic conditions, vehicle condition and how you drive.

## FEATURES

| Model   | Authentique | Expression | Dynamique |
|---|-------------|------------|-----------|
| SAFETY & SECURITY   |             |            |           |
| Airbags   |             |            |           |
| Driver and front passenger airbags                                | •           | •          | •         |
| Driver and front passenger head and chest side airbag             | •           | •          | •         |
| Brakes  |             |            |           |
| Anti-lock Braking System (ABS)                                    | •           | •          | •         |
| Emergency Brake Assist (EBA)                                      | •           | •          | •         |
| Electronic Brake-force Distribution (EBD)                         | •           | •          | •         |
| Electronic Stability Control (ESC)                                | •           | •          | •         |
| Anti-Slip Regulation (ASR)  | •           | •          | •         |
| Hill Start Assist (HSA)   | •           | •          | •         |
| Lighting  |             |            |           |
| Automatic dusk sensing headlights                                 | -           | OP         | •         |
| "See me home" function interior cabin lights                      | •           | •          | •         |
| L.E.D. daytime running lights mounted in front grille             | •           | •          | •         |
| Rear fog light  | •           | -          | -         |
| Front and rear fog lights   | -           | •          | •         |
| Manual height adjustable headlights                               | •           | •          | •         |
| Parking aids  |             |            |           |
| Rear parking sensors  | -           | -          | •         |
| Day and night rear view mirror                                    | •           | •          | •         |
| Safety Features   |             |            |           |
| Driver, front and rear passenger seat belt warning light and tone | •           | •          | •         |
| Anti-submarining system (Fix4sure) in front and rear              | •           | •          | •         |
| One-touch door locking  | •           | •          | •         |
| Height adjustable front seatbelts with load limiter               | •           | •          | •         |
| Height adjustable front headrests                                 | •           | •          | •         |
| 3 height adjustable rear headrests                                | •           | •          | •         |
| Turn indicator lights on door mirrors with highway mode           | •           | •          | •         |
| 3 three-point rear seatbelts                                      | •           | •          | •         |
| Two rear seats with ISOFIX 3-point attachment system              | •           | •          | •         |
| 3 child seat anchorage points for rear seats                      | •           | •          | •         |
| Cruise control with speed limiter                                 | •           | •          | •         |

| Model   | Authentique | Expression | Dynamique |
|---|-------------|------------|-----------|
| Automatic engine stop and start*  | •           | •          | -         |
| Security Features   |             |            |           |
| Engine immobiliser  | •           | •          | •         |
| Renault Anti-Intruder Device (R.A.I.D.) - automatic locking of doors while driving (activated once above 30km/h)                  | •           | •          | •         |
| Remote central locking with Renault Smart Key Card  | •           | •          | •         |
| INTERIOR FEATURES   |             |            |           |
| Comfort   |             |            |           |
| Hands-free entry and engine start   | -           | OP         | •         |
| Manual air conditioning   | •           | •          | -         |
| Climate control air conditioning  | -           | -          | •         |
| Height and reach adjustable steering wheel  | •           | •          | •         |
| Digital speedometer   | •           | •          | •         |
| Driver armrest with storage console   | -           | -          | •         |
| Convenience   |             |            |           |
| ECO Mode  | -           | -          | •         |
| 12 volt socket  | •           | •          | •         |
| Automatic windscreen wipers with rain sensor  | -           | OP         | •         |
| Rear windscreen wiper   | •           | •          | •         |
| Electric front windows  | •           | •          | -         |
| Electric front windows with driver anti-pinch function and one touch control  | -           | OP         | •         |
| Electric rear windows   | -           | OP         | •         |
| Manual rear windows   | •           | •          | -         |
| Multi-function trip computer  | •           | •          | •         |
| Storage - front and rear side doors   | •           | •          | •         |
| Storage - open storage in dashboard   | •           | •          | •         |
| Lighting (front ceiling, boot)  | •           | •          | •         |
| Entertainment   |             |            |           |
| 2 speaker audio system with AM/FM, MP3, auxiliary and USB input with fingertip controls and Renault Bass Reflex system            | •           | -          | -         |
| 4 speaker audio system by Arkamys with AM/FM, MP3, auxiliary and USB input with fingertip controls and Renault Bass Reflex system | -           | •          | •         |
| Bluetooth® phone pairing with audio streaming**   | •           | •          | •         |
| Renault media navigation system with 7" touchscreen and turn by turn instructions   | -           | •          | •         |
| Seating   |             |            |           |
| Manual height adjustable driver's seat  | •           | •          | •         |
| 60:40 split folding rear seats  | •           | •          | •         |
| Styling   |             |            |           |
| Black cloth upholstery with red detail  | •           | -          | -         |
| Black cloth upholstery with grey detail   | -           | •          | -         |
| Black cloth upholstery with grey hexagon detail   | -           | -          | •         |
| Gloss black interior trim   | -           | •          | •         |
| Leather wrapped steering wheel and gear knob  | -           | •          | •         |
| EXTERIOR FEATURES   |             |            |           |
| Styling   |             |            |           |
| Rear spoiler  | •           | •          | •         |
| Body coloured electric door mirrors   | -           | •          | -         |
| Electric heated folding door mirrors  | -           | OP         | •         |

| Model   | Authentique | Expression | Dynamique |
|---|-------------|------------|-----------|
| Body coloured rear bumper                               | •           | •          | •         |
| Body coloured door handles                              | -           | •          | •         |
| Hidden rear exterior door handles                       | •           | •          | •         |
| Chrome trim on radiator grille                          | -           | •          | •         |
| Rear privacy glass                                      | -           | -          | •         |
| 15" Extreme steel wheels                                | •           | -          | -         |
| 16" Passion alloy wheels                                | -           | •          | •         |
| 17" Diamond alloy wheels                                | -           | -          | 0         |
| 15" Steel temporary spare wheel                         | •           | •          | •         |
| WARRANTY  |             |            |           |
| 5 Year / Unlimited kms with 24 Hour Roadside Assistance |             |            |           |

\* Manual transmission only  
\*\*Bluetooth compatibility may vary depending on phone

- Standard
- 0 Option
- OP Available as part of Option Pack
- Not available

## OPTIONS

| Model  | Authentique | Expression | Dynamique |
|--|-------------|------------|-----------|
| Metallic paint   | 0           | 0          | 0         |
| Electric Pack <ul style="list-style-type: none"><li>- Automatic dusk sensing headlights</li><li>- Automatic windscreen wipers with rain sensor</li><li>- Electric front and rear windows with driver anti-pinch function and one touch control</li><li>- Electric folding door mirrors</li><li>- Hands-free entry and engine start</li></ul>   | -           | OP         | •         |
| Premium Pack <ul style="list-style-type: none"><li>- 4 speaker / 2 tweeter audio system with 3D sound by Arkamys AM/FM, MP3, auxiliary and USB input with fingertip controls and Renault Bass Reflex system</li><li>- R-Link Enhanced Satellite Navigation system upgraded interface, R-Sound, eco-routes, voice recognition and customisable home page</li><li>- Rear view camera</li></ul> | -           | -          | OP        |
| - 4 speaker / 2 tweeter audio system with 3D sound by Arkamys AM/FM, MP3, auxiliary and USB input with fingertip controls & Renault Bass Reflex system   | -           | -          | OP        |
| - R-Link Enhanced satellite navigation system upgraded interface, R-Sound, eco-routes, voice recognition and customisable home page  | -           | -          | OP        |
| Panoramic fixed sunroof  | -           | 0          | 0         |



COLOURS

METALLIC



FLAME RED (NNP)



ARDENT BROWN (CNF)



OYSTER GREY (KNG)



DIAMOND BLACK (GNE)



MERCURY GREY (D69)

SOLID



GLACIER WHITE (396)

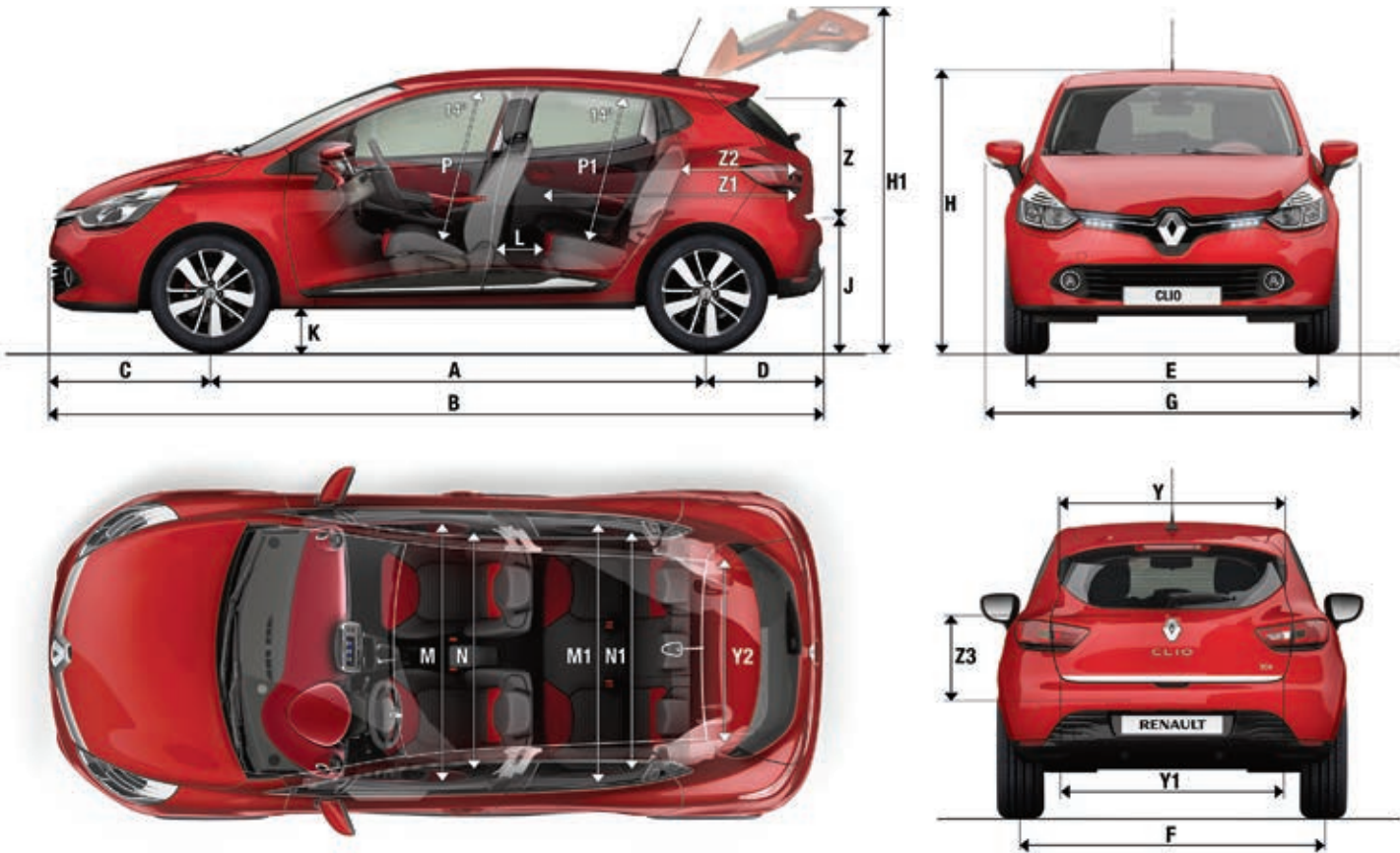


FRENCH BLUE (RPJ)\*



INCA YELLOW (ENW)

DIMENSIONS



|    |  |             |    |  |      |
|----|--|-------------|----|--|------|
| A  | Wheelbase                              | 2589        | M  | Interior elbow cabin width - front         | 1363 |
| B  | Overall length                         | 4063        | M1 | Interior elbow cabin width - rear          | 1378 |
| C  | Front overhang                         | 853         | N  | Interior shoulder cabin width - front      | 1370 |
| D  | Rear overhang                          | 621         | N1 | Interior shoulder cabin width - rear       | 1307 |
| E  | Front track (MT / AT)                  | 1509 / 1501 | P  | Front seat headroom measured at 14 degrees | 880  |
| F  | Rear track (MT / AT)                   | 1513 / 1505 | P1 | Rear seat headroom measured at 14 degrees  | 847  |
| G  | Overall width                          | 1732        | Y  | Upper boot entry width                     | 1039 |
| G  | Overall width (including door mirrors) | 1945        | Y1 | Lower boot entry width                     | 905  |
| H  | Unladen height                         | 1448        | Y2 | Interior width between wheel arches        | 1011 |
| H1 | Unladen platform height                | 1920        | Z  | Rear entry height                          | 550  |
| J  | Boot sill height                       | 716         | Z1 | Load area length with rear seats folded    | 1388 |
| K  | Running clearance                      | 159         | Z2 | Load area length behind rear seats         | 649  |
| L  | Knee room (rear passengers)            | 140         | Z3 | Height up to the parcel shelf              | 558  |

\*Not available on Authentique

Measurements in millimetres



# KEY FEATURES

FEATURE AVAILABILITY VARIES PER MODEL.



**AERODYNAMIC ACTIVE VENTS**

The new Renault Clio reaps the benefits of Renault’s F1® engineering excellence with a number of features to improve aerodynamic efficiency and reduce fuel consumption. The active vents adjust the flow of air through the radiator to cool the engine in slower traffic, or close to improve aerodynamics and optimise fuel consumption.



**R-LINK ENHANCED AUDIO AND NAVIGATION**

A more sophisticated, high-tech communication option for the Dynamique model, R-Link keeps you immersed in the things you love. The 7" touch-screen hosts a multitude of features including voice recognition control of the apps and navigation, integrated TomTom navigation and other features like R-Sound just for fun.



Overseas Model Shown

**MEDIANAV AUDIO AND NAVIGATION**

As our environments expand, navigation systems are becoming more and more of a daily necessity. The Renault Clio’s Media Navigation system on the Expression and Dynamique models recognises this and provides a 7" touch-screen system to display routes and audio information in vivid colour.



**BLUETOOTH® CONNECTIVITY**

Who doesn’t have a smartphone these days? Every Renault Clio model can connect wirelessly to your smartphone via Bluetooth® for hands-free mobile usage. You can also play music via USB or auxiliary input and control play from the fingertip controls near your steering wheel.



**AUTOMATIC CLIMATE CONTROL**

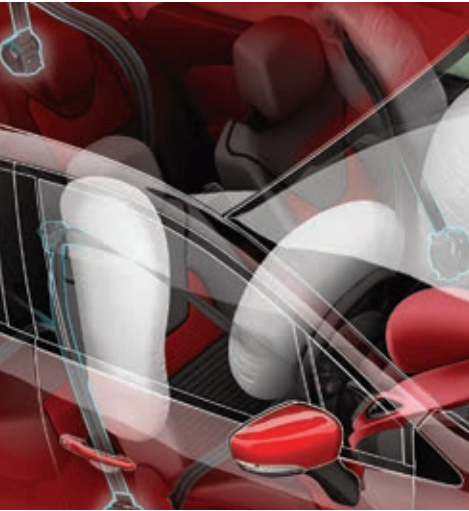
Climate control in the new Renault Clio Dynamique quickly adjusts the cabin temperature to your preferred setting, then responsively maintains this temperature throughout your journey. The system has been designed to deliver optimal performance in extreme temperatures.



Overseas Model Shown

**R-SOUND EFFECT**

Personalise your new Renault Clio to sound the way you want. The R-Sound Effect application on the R-Link Enhanced Audio System in the Dynamique model can transform your engine to sound like a Renault Sport race car. Choose from six different engine sound profiles. The app synchronises the sound effects with your engine to produce a realistic driving soundscape within the cabin.



**AIRBAGS**

Driver and front passenger front airbags, plus head and chest side airbags, react within fractions of a second during impact. Sensors in the side pillars of the Renault Clio detect the force of impact to make sure the lateral airbags provide the protection necessary.



**ESC AND TRACTION CONTROL**

The Electronic Stability Control system uses seven sensors to apply the brakes on any wheel and control torque as required, to keep the vehicle on the road. The Anti-Slip Regulation (ASR) traction control system detects loss of grip and automatically reacts to maintain traction.



**EMERGENCY BRAKE ASSIST & HILL START ASSIST**

When the Renault Clio senses you’re in a tricky spot, it gives you a hand by applying extra braking assistance, before the ABS system kicks in. Hill Start Assist holds the vehicle in position for two seconds when you remove the brakes on a hill, giving you time to accelerate forward without slipping back.



**REAR VIEW CAMERA**

The Renault Clio’s rear view camera, optional on the Dynamique model, is tucked away in the rear logo, perfectly positioned to provide a clear view of the road behind you when reversing or parking. Distance guidance lines help guide you into place.



**RENAULT BASS REFLEX SYSTEM**

To ensure excellent acoustics inside the Renault Clio and avoid distortion when your music is turned up loud, the speakers in the front feature Bass Reflex technology. This improves the clarity of your music and ensures better reproduction of low frequencies.



**RENAULT SMART CARD KEY**

Technology is key in the new Renault Clio – so it shouldn’t be surprising that there is no key in the traditional sense. The Renault Smart Card Key enables remote central locking. In the Dynamique, you don’t even need to touch the key to unlock the doors and start the engine.



# OUR QUALITY: YOUR PEACE OF MIND



## GENEROUS COMPREHENSIVE WARRANTIES

Renault has been building and racing motor vehicles for more than 100 years, creating a legacy of invention, innovation and a competitive spirit that drives us to excel. The wealth of experience we've gained is reflected in the design, performance and quality of every vehicle we sell.

We're so confident that your new Renault will provide you with many years of reliable and enjoyable driving that we're backing our quality promise with competitive and comprehensive warranty terms on all of our vehicles.

## 24/7 ROADSIDE ASSISTANCE

Renault Roadside Assistance is a service Renault provides to you as a new Renault owner for the period of your new vehicle warranty, regardless of how many kilometres you travel.

You could run out of fuel, lose your car keys, have a flat tyre or an accident just around the corner or a long way from home. Just call 1800 009 008 and we'll arrange the assistance you need to get back on the road. The service is available 24 hours a day, 365 days per year and covers you right across Australia.

## CAPPED PRICE SERVICING

Fantastic Renault value doesn't end once you've got your new vehicle home – you'll enjoy the benefits of lower maintenance costs for your first 3 years or 45,000km (whichever occurs first) behind the wheel thanks to Capped Price Servicing.

The Capped Price Service program covers the cost of all genuine parts, lubricants and labour required for standard scheduled maintenance services.

And because you're busy, Renault vehicles are designed to require servicing only once per calendar year – not every six months like many other manufacturers.

## RENAULT SPECIALIST TECHNICIANS

Only Renault authorised dealerships have registered Factory Trained Technicians. Known globally as COTECHs, they're trained by Renault to perform all factory-recommended servicing and repair operations. This ensures your car always receives the quality attention it deserves.

COTECHs use specialised service tools and equipment to ensure your vehicle continues to provide optimum performance, safety, economy and emissions. When you combine this technical expertise with the very best Genuine Renault parts, lubricants and accessories, you can be sure your car is in the safest of hands.

## REPAIR & SERVICE COURTESY CARS

Renault quality extends to our customer service.

To minimise your inconvenience while your vehicle is undergoing maintenance or repairs, our authorised Renault Dealers have low cost loan vehicles ready and waiting for you. Simply book a loan vehicle in advance when you book your Renault in for service with your dealer.

Alternatively, most Renault Dealers offer a drop off service to local destinations or to the nearest public transport.

## GENUINE RENAULT PARTS

Genuine Renault parts, lubricants and accessories are of the highest quality, and specifically designed for Renault vehicles. They are purpose-built to our exacting specifications, guaranteeing fit, function and performance first and every time. They are also covered by our 1-year unlimited kilometres warranty.

Authorised Renault Dealers keep high stock levels of commonly used genuine Renault parts to ensure continuous availability.

## RENAULT DEALER NETWORK – THE BENEFITS

Everywhere, at every stage in your car's life, the Renault dealer network is with you, providing quality service, including:

- Personalised reception and advice.
- The use of only Genuine Renault parts.
- The Renault 1-year parts and labour guarantee for all repairs carried out by a Renault dealership.
- Equipment and tools specially designed for your Renault.
- Our pricing structures are simple, clear and transparent, so you can always have your car serviced or repaired with confidence.





([www.renault.com.au](http://www.renault.com.au))

**5**  
**YEAR WARRANTY**  
Unlimited kms  
RENAULT recommends 

For more information call 1800 009 008 or visit [www.renault.com.au](http://www.renault.com.au). Disclaimer: Details at January 2014 and subject to change. Vehicles displayed in this brochure are overseas models and shown for illustration purposes only. Australian vehicles may differ in characteristics, specifications, equipment, accessories and colours than shown in this brochure. Please see your Renault dealer for full specification and vehicle option queries. Vehicle Distributors Australia Pty Ltd reserve the right to modify its models without notice including their characteristics, specifications, equipment, accessories and colours. Publication date January 2014. Vehicle Distributors Australia Pty Ltd 4 Nexus Court, Mulgrave, Victoria 3170.

REN11912